

ART CLAY SILVER

CATALOGUE VOL 2

2009

April 9, 2009



SILVERLAB PTY LTD
P: 0411 881 127
F: (03) 8648 6399
E: sales@silverlab.com.au
<http://www.artclay.com.au>

ART CLAY SILVER 650 SERIES

1. CLAY TYPE

- 650 series can be fired as low as 650°C
- It shrinks only 8 to 9 percent after firing
- It can be fired with sterling silver or glass
- Most shaping is done with this type. Wad it up and roll it out flat modeling clay
- 99.9% silver after firing



7g
A-052 \$21



10g
A-053 \$30



20g
A-054 \$54



50g
A-075 \$132

2. PASTE TYPE

- Adhere Art Clay Silver unfired pieces together
- Fill in cracks in unfired pieces
- Draw patterns
- Paint directly onto leaves, paper, etc.
- 99.9% silver after firing



10g
A-066 \$29



20g
A-067 \$51

3. SYRINGE TYPE



- Create fine, detailed lines by applying the silver clay through the syringe tip. A variety of tips are available (Narrow, Medium, Wide).
- 99.9% silver after firing



A-069 10g / no nozzle \$35

A-068 10g / 1 nozzle (medium) \$39

A-076 10g / 3 nozzles \$48

A-070 5g \$20



Prices are GST inclusive.
All prices may be varied without notice.
CATALOGUE VOL1, 2009
©SILVERLAB PTY LTD 2008. All rights reserved.

4. SILVER OVERLAY PASTE



- Formulated specifically to use on glazed surfaces such as glazed porcelain, glass, china, etc.
- 99% silver after firing



15g
A-044 \$58

ART CLAY SILVER 650 SLOW DRY SERIES

1. CLAY TYPE

- 650 Slow Dry series can be fired as low as 650°C
- It shrinks only 8 to 9 percent after firing
- The moisture formula allows for braiding, weaving, and generally gives the artist up to 4 times more working time.
- 99.9% silver after firing



7g
A-147 \$21



10g
A-148 \$30



20g
A-137 \$54



50g
A-139 \$132



Prices are GST inclusive.
All prices may be varied without notice.
CATALOGUE VOL1, 2009
©SILVERLAB PTY LTD 2008. All rights reserved.

ART CLAY ORIGINAL SERIES

1. PAPER TYPE



10g
A-105 \$45

- No need to dry. Can be folded. Perfect for ORIGAMI
- Fires at 800°C for 30 mins



2. OIL PASTE TYPE



10g
A-024 \$52

- Repair fired Art Clay Silver pieces, attach two fired pieces together and / or attach silver findings to fired silver pieces together
- Fires at 850°C for 10 mins

3. GOLD / K22



3g
A-123 \$360



7g
A-124 \$760

- Can be shaped like clay type or used as gold paste
- Fires at 990°C for 60 mins



4. Art Clay Gold Paste



1.5g
A-024 \$165

- Net.1.5g <Au 77.5%>
- Art Clay Gold Paste is in a viscous liquid form, so that you can add texture or draw directly on the surface of Art Clay Silver (fired piece), ceramic, porcelain and/or glass.
- This product has 77.5% of indicated weight is 24-Karat gold, and it becomes 22-Karat gold after firing. Art Clay Gold Paste comes in two bottles. One has 1.5gm of thick paste; the other contains a 5ml medium that is used to dilute the paste to a more workable consistency on glazed surfaces.
- Fires at 800°C. The holding time will vary depending on the combined material



Prices are GST inclusive.
All prices may be varied without notice.
CATALOGUE VOL1, 2009
©SILVERLAB PTY LTD 2008. All rights reserved.

FINE SILVER

1. SILVER FLAKES



Fine
H-001-2 10g \$22



Medium
H-002-2 10g \$22

2. WIRES



Flat Bezel Wire 4mmx0.2mmx50cm(w/T/L)
R-013 \$13



Flat Bezel Wire 6mmx0.2mmx50cm(w/T/L)
R-048 \$18

3. FINDINGS

Bail Back



10pcs / pkt
K-008a \$20

Flat Screw Eye



Small
10pcs / pkt
K-038a
\$15



Large
10pcs / pkt
K-006a
\$17

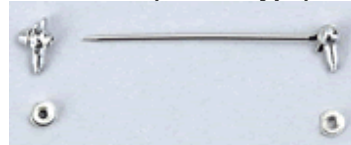
Brooch Pin



35mm
K-009
\$12

55mm
K-026
\$13

Brooch Pin (Screw Type)



35mm
K-058
\$7

55mm
K-059
\$7

4. STONE SETTING

Round Cut Settings 5pcs / pkt



K-028a 3mm \$18
K-029a 4mm \$22
K-030a 5mm \$22

Marquis Cut Settings (8x4mm) 5pcs / pkt



K-043a \$36
K-044a w / tongue \$36



Prices are GST inclusive.
All prices may be varied without notice.
CATALOGUE VOL1, 2009
©SILVERLAB PTY LTD 2008. All rights reserved.

Kits

Starter Set



A-0166K \$120

ITEM#	Description	QTY
Material		
	ACS 650 Slow Dry 10g	1
Tools		
	Ring Size Scale	1
	Polishing cloth	1
	Silver polish (5cc)	1
	Liver of sulfur (6cc)	1
	Sponge sanding pad #320-600 / 5.8x3.3cm cut	1
	Sponge sanding pad #800-1000 / 5.8x3.3cm cut	1
	Sponge sanding pad #1200-1500 / 5.8x3.3cm cut	1
	Stainless Steel Brush (Short Bristles) w/ACS logo	1
	Medium Fine File w/ACS logo	1
	Burnisher (small) w/ACS logo	1
	Tweezers w/ACS logo	1
	Wooden Mandrel (separated) w/ACS logo	1
	Stainless net w/protection cage & frame	1
Instruction		
	DVD "Art Clay Silver Basic Tips & Techniques"	1
	12 projects manual	1

Starter Set (Pendant Kit)



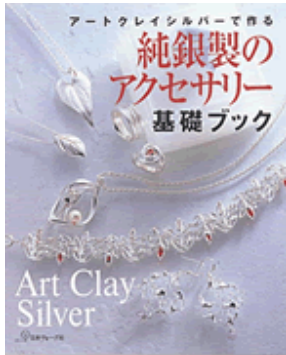
A-094K \$69

Instruction Manual
 Instruction for stovetop firing (English)
 ACS 650 Slow Dry Clay 7g x 1
 Roller
 Plastic strips (1.5mm thick)
 Sponge sanding pad #320-600 1/8
 Sponge sanding pad #800-1000 1/8
 Sponge sanding pad #1200-1500 1/8
 Stainless Steel Brush
 Burnisher
 Silver polish (net : 10g tube)
 Polishing cloth
 Sulphurizing solution (6cc)
 Round jump ring
 Charm holder
 Stainless net w/protection cage & frame
 Tweezers

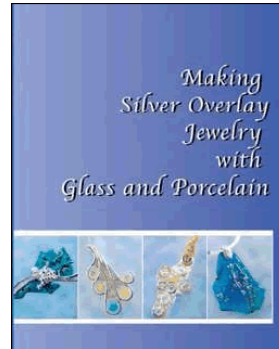


Prices are GST inclusive.
 All prices may be varied without notice.
 CATALOGUE VOL1, 2009
 ©SILVERLAB PTY LTD 2008. All rights reserved.

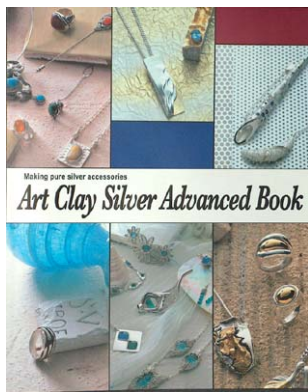
BOOKS & VIDEO



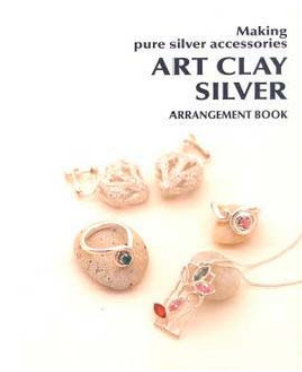
Art Clay Silver Basic Book
(English)
S-048-EG \$38



Silver Overlay Jewelry with Glass & Porcelain
(English)
S-165 \$38



Art Clay Silver Advanced Book
(English)
S-138 \$38



Arrangement Book for Certification Course
(English)
S-167-E \$38



Prices are GST inclusive.
All prices may be varied without notice.
CATALOGUE VOL1, 2009
©SILVERLAB PTY LTD 2008. All rights reserved.

TOOLS & MATERIALS



File(fine)
F-021 \$9



File(medium fine)
F-020 \$9



Agate Burnisher
R-036 \$18



Stainless steel brush(short bristles)
F-030 \$9



Wooden Ring Mandrel
F-026 \$14



Burnisher(small)
F-031 \$19



Oyumaru
F-047 \$6



Rubber Block
(2" cube)
F-019 \$10



Core Cork Clay
F-044 \$14



Heat Oyumaru in 80°C hot water for 3 minutes. Press piece to be duplicated into the softened Oyumaru. Leave until Oyumaru is cool and firm. Remove original.



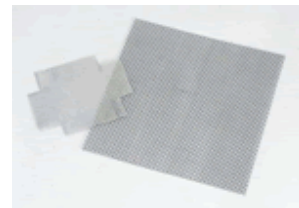
Mold is now ready to use. Press Art Clay Silver clay type into the mold and allow to harden. Remove carefully and finish as desired. To reuse Oyumaru, return to 80°C hot water until softened again.



Use for forming hollow patterns. Model into any shape and make an excellent internal structure for Art Clay. Burns away during firing.



Rubber Block 2" X 2" X 4"
R-011 \$18



Stainless steel net & protection net
F-018b \$16



Prices are GST inclusive.
All prices may be varied without notice.
CATALOGUE VOL1, 2009
©SILVERLAB PTY LTD 2008. All rights reserved.